

Viola

Charlie Barber

An abstract background featuring a dense field of small, glowing red and purple dots. A faint, stylized globe is visible in the center, composed of a grid of lines. The title 'Rolling Parade' is overlaid in a large, bold, white sans-serif font with a slight shadow effect.

Rolling Parade

for chamber orchestra

Instrumentation:

2 Flutes
 2 Oboes
 2 Clarinets in A
 2 Bassoons

2 Horns in F
 2 Trumpets in B flat

Timpani

Violin 1
 Violin 2
 Viola
 Violoncello
 Contrabass

Strings: 'Divisi' indicates conventional outside-inside division

Score in C

Duration:

c. 2 minutes

Programme note:

Rolling Parade takes its name from the imagery of a continuous, evolving procession. The word *parade* typically evokes people marching in ceremony, celebration, or protest, while *rolling* suggests a sense of motion that is ongoing and unstoppable.

This piece draws on the idea of the circus of life - a reflection on the chaotic, unpredictable, and at times absurd nature of existence. The music seeks to capture that blend of festivity and disorder, of spectacle and uncertainty.

There is also a nod to the revolutionary 1917 ballet *Parade*, created for Diaghilev's Ballets Russes. With its scenario by Jean Cocteau, music by Erik Satie, and sets and costumes by Pablo Picasso, *Parade* embodied avant-garde experimentation and defied artistic conventions. *Rolling Parade* channels some of that spirit, weaving together disparate elements into a singular, unpredictable procession.

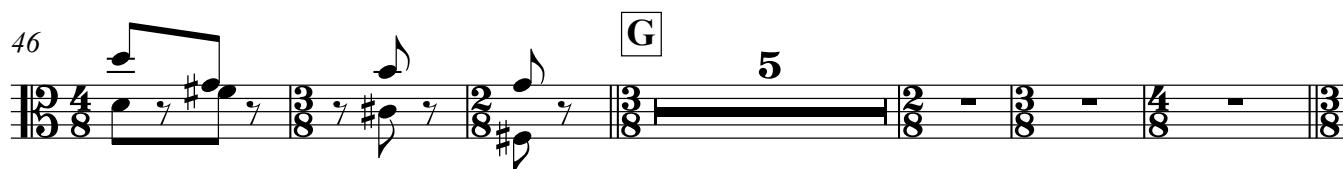
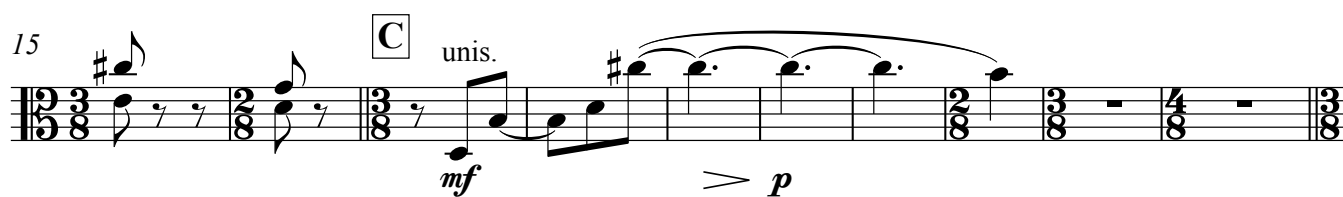
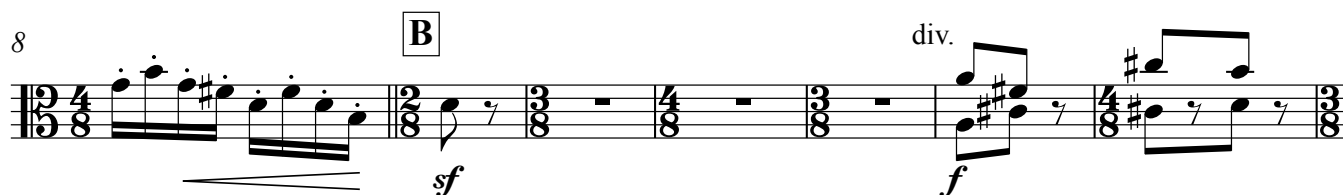
Rolling Parade

A

Allegro giocoso

$\text{♩} = 116$

Charlie Barber



57 H unis.
pizz. arco

[illegible]

73 **J**

f

81 K 4 unis. *f* L 8

Detailed description: This musical score segment contains measures 81 through 88. Measure 81 is marked with a key signature change to D major (indicated by a 'K' in a box) and a time signature change to 3/8. It features a whole note chord of D4, F#4, and A4. Measure 82 begins a melodic line with eighth notes D4, F#4, A4, and D5. Measures 83 through 88 continue this eighth-note melody. A '4' above the staff indicates a four-measure phrase. A 'unis.' marking is placed above the staff in measure 82. A dynamic marking of '*f*' (forte) is placed below the staff in measure 82. A 'L' in a box is placed above the staff in measure 86. An '8' above the staff indicates an eight-measure phrase spanning measures 86 and 87. The score ends with a double bar line at the end of measure 88.

97 M

p *mf* *f*

Charlie Barber - Rolling Parade

105 **N**


A musical score for the song 'The Rose Tree'. The score is written for a single melodic line on a grand staff (treble and bass clefs). The key signature is one sharp (F#), and the time signature is 2/4. The melody is divided into three measures, each with a different time signature: 2/4, 4/4, and 2/4. The first measure starts with a mezzo-piano (*mp*) dynamic. The second measure starts with a mezzo-forte (*mf*) dynamic. The third measure starts with a forte (*f*) dynamic. The melody is a simple, folk-like tune. The lyrics 'The Rose Tree' are written below the first measure, and 'The Rose Tree' is written below the second measure. The score is labeled 'The Rose Tree' at the top left.

112

musical score for "The Wind" by Gustav Mahler, measures 1-8. The score is in 3/2 time and features a complex rhythmic pattern with various time signatures (3/2, 2/4, 3/4, 4/4, 3/2, 2/4, 3/4, 4/4). The dynamics range from "cresc." to "ff".

120

120



P

div.

f

f

129 **Q**
unis

unis.

ff *f* *p* *mp*

137 **R**

The musical score for 'The Rose Tree' is presented on a single staff. It begins with a treble clef and a key signature of one sharp (F#). The tempo is marked 'Allegretto' and the time signature is 2/4. The score consists of 12 measures. The first measure contains a quarter note G4. The second measure is a whole rest. The third measure is a quarter note A4. The fourth measure is a quarter note B4. The fifth measure is a quarter note C5. The sixth measure is a quarter note B4. The seventh measure is a quarter note A4. The eighth measure is a quarter note G4. The ninth measure is a quarter note F#4. The tenth measure is a quarter note E4. The eleventh measure is a quarter note D4. The twelfth measure is a quarter note C4. The score is marked with a dynamic of *mf* (mezzo-forte) at the beginning and *f* (forte) at the end.

142

142

ff